



Quick Reference Guide

October 14, 2011

Project Documents

Project Web Site:

<http://tinyurl.com/vppdocs>

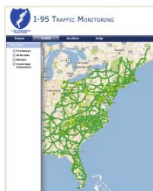
Click on the "Highlights" tab after following the above link.

Project Interface Guide: <http://tinyurl.com/vppinterfaceguide-sep2011>

Information for integrators of VPP data.

VPP Monitoring Site

<http://i95.inrix.com>



Must have an account and you're your agency have signed a Data Use Agreement ([DUA](#))

Account request page: <http://i95.inrix.com/I95/Register.aspx>

VPP Analysis Suite

<http://vpp.ritis.org>



Send account requests to accounts@ritis.org

Send feedback to vpp-feedback@ritis.org

Tutorial and Summary: <http://vpp.ritis.org/suite/screencast/>

Long Distance Trip Planner

<http://www.i95travelinfo.net>



Coalition-wide Web Site for multi-state travelers.

Member Agencies: Please include link to site on your public 511/travel information page.

Who to contact with Questions



INRIX Monitoring Site
Vehicle Probe Project Suite
Data Validation
VPP Contract Issues
General Project Questions

Rick Schuman at 407-298-4346, rick@inrix.com
Michael Pack at 301-405-0722, PackML@umd.edu
Stan Young at 301-403-4593, seyoung@umd.edu
Kathy Frankle at 410-414-2925, kfrankle@umd.edu
Karen Jehanian at 610-228-0211, kjehanian@kmjinc.com