



Quick Clearance in Winter Weather

Meredith McDiarmid, PE
State Systems Operations Engineer

I-95 Corridor Coalition
May 12, 2015

Quick Clearance Legislation

G.S. 20-161 (f)

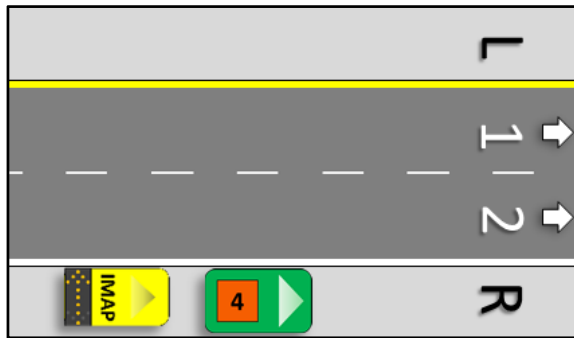
- **Reduces liability**
- **Allows removal for**
 - 24-hr tag expiration
 - Stolen or vandalized cars
 - Hazardous locations
- **Heavy Towing Program**
 - Alternative to rotation wreckers
 - No paid incentives
 - Activated via NCDOT & Law Enforcement concurrence



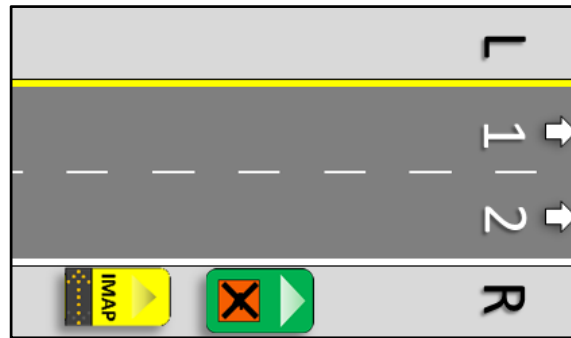
“Signal 4” – MOU with NCDOT & SHP

- 24-hr Removal

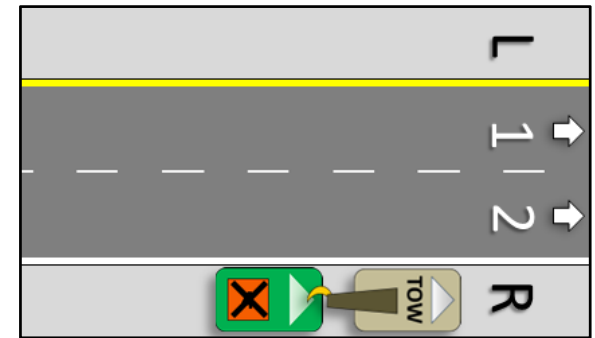
[vehicle tagged]



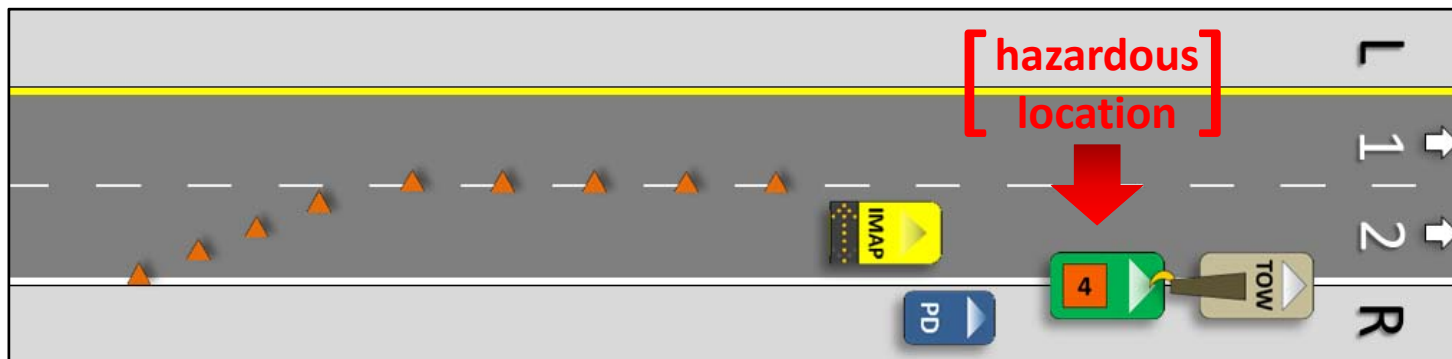
[24 hrs elapse – wrecker called]



[wrecker removes]



- Immediate Removal



Winter Weather – Prior to Storm

- **Partners**



- **Planning:** “When does immediate towing go into affect?”

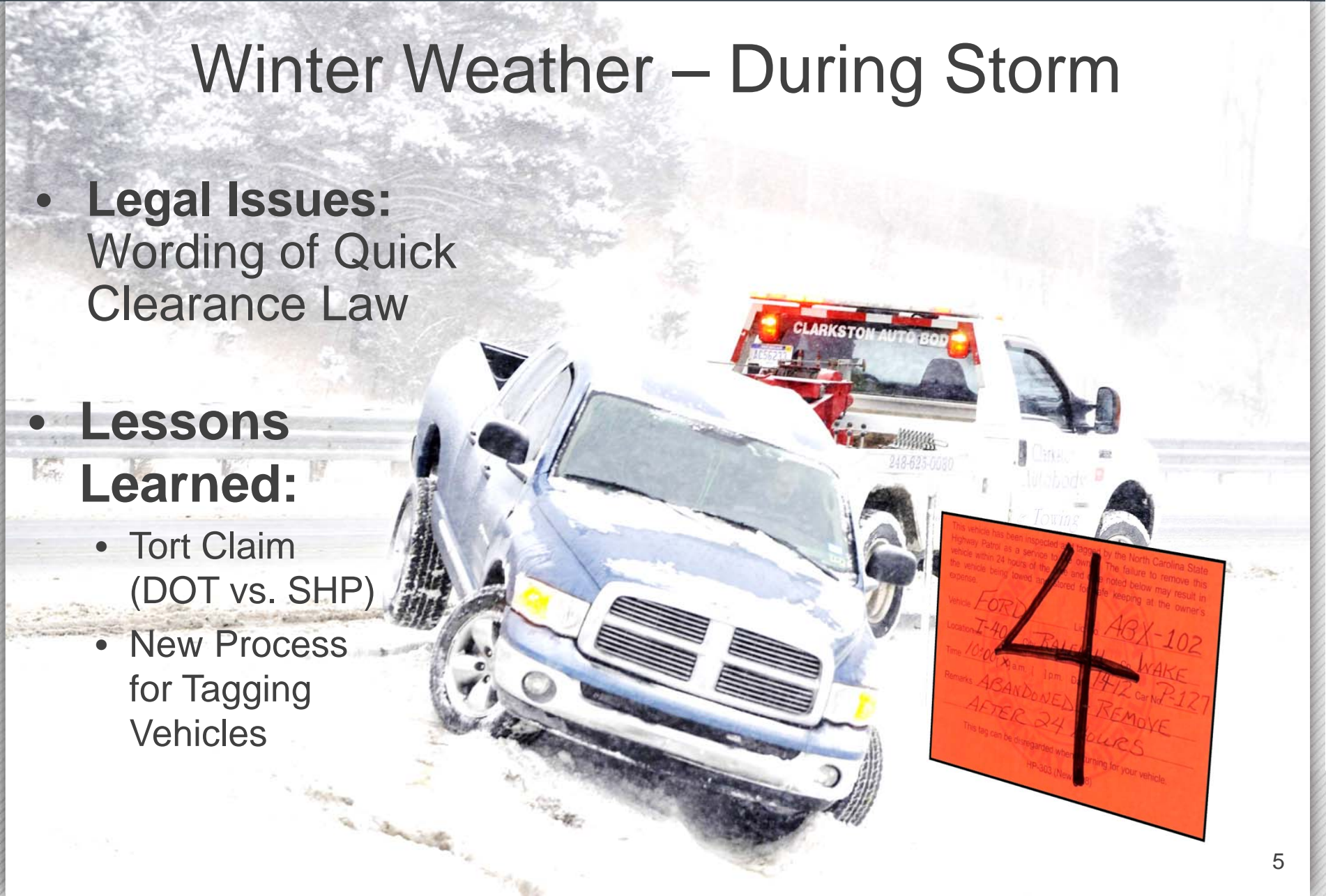


Winter Weather – During Storm

- **Legal Issues:**
Wording of Quick Clearance Law

- **Lessons Learned:**

- Tort Claim (DOT vs. SHP)
- New Process for Tagging Vehicles



Future of Quick Clearance

- **Wording of Law**

- **Partnering
for Legal
Claims**





Questions?

Meredith Mcdiarmid, PE
(mmcdiarmid@ncdot.gov)