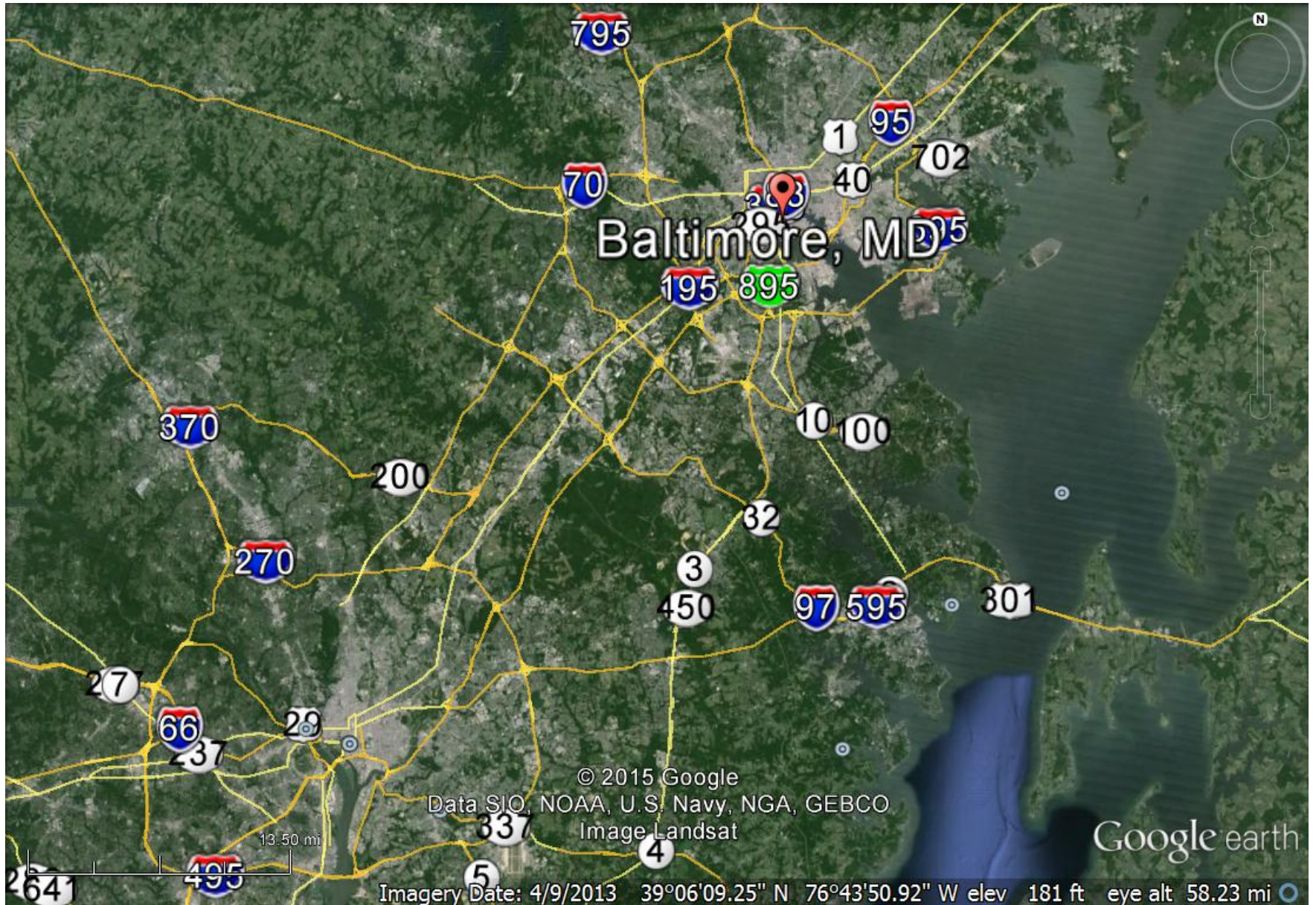




**TWO CITIES IN
*CONFLUENCE***

The Baltimore –
Washington Corridor





- **Average Daily Traffic Count for Baltimore Beltway – 180K to 200K**
- **Average Daily Traffic Count for Washington Beltway – 200K to 220K**
- **Average Daily Traffic Count Between the Beltways on I-95 – 190K to 210K**
- **Distance between the Beltways on I-95 – 22 Miles**



- **Both Cities have Professional Baseball Teams**
- **Both Cities have Professional Football Teams**
- **Washington, DC (NCR) is the Nation's Capital – numerous public demonstrations**
- **Baltimore has been the Host of numerous Major Events in the past**
- **Washington has major political events Annually and Every Four Years**
- **Both Cities are on the I-95 Corridor – major North/South Interstate on the East Coast**



PARTNERSHIPS

And

INFORMATION SHARING

(Situational Awareness)



PARTNERSHIPS

- **Response to Daily Incidents**
- **Participation in Regional/Local Exercises**
- **Planning for Major/Special Events**
- **Mutual Aid/Assistance**
- **Sharing of AOR**
- **Membership in Groups/Organizations**



INFORMATION SHARING

(Situational Awareness)

- **Direct Communications – Voice, Radio, and Data**
- **Emergency Notification Systems**
- **511 Systems**
- **Regional Integrated Transportation Information System (RITIS)**
- **CCTV Sharing – Websites and mView**



COMMENTS

And

QUESTIONS

